

**Three Point Wood Chuck Boom Mower
Operator Manual
With Parts Listing**

**McKenzie Supply & Equipment Ltd.
1660 20-1/2 Street
Rice Lake WI 54868
715-234-6848
Email : mckequip@chibardun.net
Web Site : www.mckenzieltd.com**

Table Of Contents

Safety Introduction	1
Safety Messages	2-4
Operation Section	5
Maintenance Section	6
Parts Section	7-16
Main Frame Parts Diagram	7
Main Frame Parts List	8
Oil Tank Parts Diagram & List	9
Base Boom Parts Diagram & List	10
Outer Boon Parts Diagram	11
Outer Boom Parts List	12
Mower Housing Parts Diagram & List	13
Mower Spindle Drive Parts Diagram	14
Mower Spindle Drive Parts List	15
Hydraulic Relief Valve Parts Diagram & List	16

Safety Introduction

A safe and careful operator is the best operator. Safety is of primary importance to the manufacturer and should be to the owner operator. Most accidents can be avoided by being aware of your equipment, your surroundings, and observing certain precautions. The safety section of this manual includes a list of safety messages that, if followed, will help protect the operator and bystanders from injury or death. Read and understand these safety messages before assembling, operating or servicing this attachment. This equipment should only be operated by those persons who have read the manual, who are responsible and trained, and who know how to do so safely and responsibly.

The safety alert symbol combined with a signal word, as seen below, is used throughout this manual and on decals which are attached to the equipment. The safety and alert symbol means: "**ATTENTION! BECOME ALERT! YOUR SAFETY IS INVOLVED!**" The symbol and signal word are intended to warn the owner / operator of impending hazards and the degree of possible injury faced when operating this equipment.

Practice all usual and customary safe working precautions and above all remember safety is up to YOU! Only YOU can prevent serious injury or death from unsafe practices.

CAUTION!

This symbol designates the lowest level of safety message; **warns of possible injury**. Decals located on the equipment with this signal word are black and yellow.



WARNING!

This symbol warns of **serious injury or possible death!** Decals located on the equipment with this signal word are black and orange



DANGER!

This symbol warns of **imminent death / critical injury!** Decals located on the equipment with this signal word are red and white.



READ, UNDERSTAND, and FOLLOW the following safety messages. Serious injury or death may occur unless care is taken to follow the warnings and instructions stated in the safety messages. Always use common sense to avoid hazards.

Safety

DANGER!



Never operate the mower or tractor until you have read and completely understand this operator manual, and the tractor operator manual, and each of the safety messages found in this manual and on the tractor and mower. Learn how to stop tractor engine suddenly in an emergency. Never allow inexperienced or untrained personnel to operate the tractor and mower without supervision. Make sure operator has fully read and understood the manuals prior to operation.

WARNING!



Always maintain the safety decals in good readable condition. If the decals are missing, damaged, or unreadable, obtain and install replacement decals immediately.

WARNING!



Operate this attachment only on a tractor equipped with an approved roll-over protection system (ROPS). Always wear seat belt. Serious injury or even death could result from falling off power unit, particularly during a roll-over, when operator could be pinned under power unit.

WARNING!



Do not modify or alter this mower. Do not permit anyone to modify or alter this mower, or any of its components or any mower function.

DANGER!



BEFORE leaving the tractor seat, always engage parking brake and turn off the PTO, stop engine, remove key, and wait for all moving parts to stop. Never dismount tractor with the engine running. Operate controls from tractor seat only.

Safety

DANGER! Never allow children or other persons to ride on tractor or mower. Falling off can result in serious injury or death.



DANGER! Never work under the mower, or any lifted component unless the mower is securely supported or blocked up to prevent sudden or inadvertent falling which could result in serious injury or death.



DANGER! Do not operate mower with hydraulic oil leaking. Oil is expensive and its presence could present a hazard. Do not check for leaks with your hand! Use a piece of heavy paper or cardboard. High pressure oil streams from breaks in the line could penetrate the skin and cause tissue damage including gangrene. If oil does penetrate skin, have the injury treated immediately by a physician knowledgeable and skilled in this procedure.



WARNING! The operator and all support personnel should wear hard hats, safety shoes, safety glasses, and proper hearing protection at all times for protection from injury including injury from items thrown by the mower.



WARNING! Periodically inspect all moving parts for wear or damage and replace when necessary with authorized service parts. Look for loose fasteners, worn or broken parts, and leaky or loose fittings. Make sure all pins have cotter pins and washers if required. Serious injury may occur from not properly maintaining this mower in good working order.



DANGER! Extreme care should be taken when operating near loose objects such as gravel, rock, wire, and other debris. Inspect the area before mowing. Foreign objects should be removed from the site to prevent machine damage and / or bodily injury or even death. Any objects that cannot be removed must be clearly marked and carefully avoided by the operator. Stop mowing immediately if blades strike foreign object. Repair all damage and make certain rotor or blade carrier is balanced before resuming mowing.



Safety

DANGER!



All safety shields, guards and safety devices including but not limited to: Deflectors, chain guards, steel guards, and retractable door shields should be used and maintained in good working condition. All safety devices should be carefully inspected at least daily for missing or broken components. Missing, broken, or worn items must be replaced at once to reduce the possibility of injury or death from thrown objects, entanglement, or blade contact.

DANGER!



Never operate mower in raised position. Raising mower off the ground creates possibility of objects being thrown from mower.

DANGER!



Never service mower with tractor engine running. Before performing service work shut off engine, remove key, and make sure mower is securely blocked.

DANGER!



The rotating parts of this mower have been designed and tested for rugged use. However, the blades could flail upon impact with heavy, solid objects such as metal guards rails and concrete structures. Such impact could cause the broken object to be thrown outward at very high velocities. To reduce the possibility of property damage serious injury, or even death, never allow the cutting blades to contact such obstacles.

DANGER!



NEVER use drugs or alcohol immediately before or while operating the tractor and mower. Drugs and alcohol will effect an operator's ability to operate the equipment safely. Before operating the tractor or mower, an operator on prescription or over-the-counter medication must consult a medical professional regarding any side effects of the medication that would hinder their ability to operate the equipment safely. **NEVER** knowingly allow anyone to operate this equipment when their alertness or coordination is impaired. Serious injury or death to the operator or others could result if the operator is under the influence of drugs or alcohol.

Operation

Pre Start Up Instructions:

1. Make sure tractor motor is shut off and key is removed.
2. Place parking brake on.
3. Read all warning labels & safety decals on mower & tractor.

Mower attachment instructions :

1. Hook up mower to tractor three point hitch.
2. Check PTO drive line make sure it is proper length for tractor.
3. Attach PTO drive line to tractor. Make sure locking collars are securely installed.

Mower start up instructions :

1. Fasten seat belt and start engine.
2. Engage tractor PTO.
3. After blades engage, slowly increase engine speed until desired 540 PTO RPM is achieved.

Mowing instructions :

1. Travel at slower ground speeds until you get used to mowing.
2. Never lift mower head more than 2" off the ground .
3. Never travel faster than you can react to terrain changes.
4. The taller the weeds are, the slower you will have to travel. (Average Speed 0-5 MPH)
5. If foreign object is struck stop mower immediately and check for damages.

Maintenance

General :

1. Always block mower up and remove key from tractor before servicing.

Daily Maintenance :

1. Check spindle drive gear lube level.
2. Thoroughly check mower for loose fasteners & wear or damage before operation.
3. Check all safety devices for damage and wear, make sure they are in good working condition.
4. Make sure all safety decals are undamaged and legible.
5. Check blades and blade bolts for excessive wear or damage.

Periodic Maintenance :

1. Check mower housing for cracks or other damage, fix as needed.
2. Check hydraulic motor for signs of fatigue or excessive wear.
3. Check hydraulic lines and quick disconnects for excessive wear.
4. Check blade carrier for damage or excessive wear.

Blade maintenance :

1. Sharpen blades as required.
2. Never sharpen excessively worn or damaged blades.
3. Always use grinder to sharpen blades.
4. Always follow original sharpening pattern.
5. Never sharpen blade to razor edge always leave 1/16" blunt edge.
6. Do not sharpen back side of blade.
7. Never straighten, weld, or heat mower blade.
8. Never hard surface mower blade, this could cause blade to fail.

Blade Replacement :

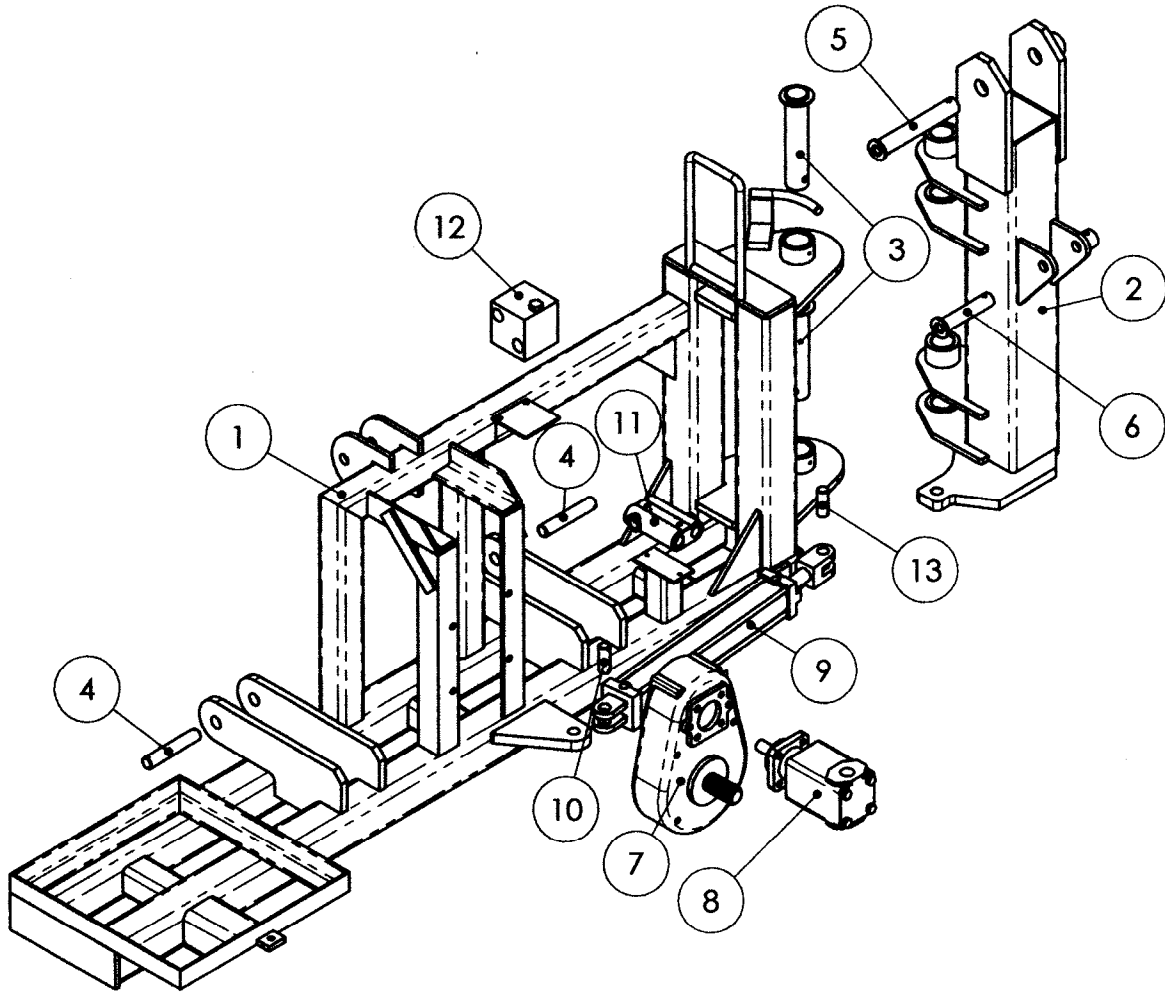
1. Use only original equipment blades on this mower.
2. Always replace blades in pairs.
3. Always replace blade bolts when replacing mower blades.

Hydraulic Oil & Filter Maintenance :

1. Change return line filter after first 100 hours of operation. Change filter again at 600 hours of operation.
2. Change oil and filters at 1200 hours of operation. After that continue to change oil filter every 600 hours & oil every 1200 hours of operation.
3. Use Dextron III or equal oil.

Parts

Main Frame Parts Diagram



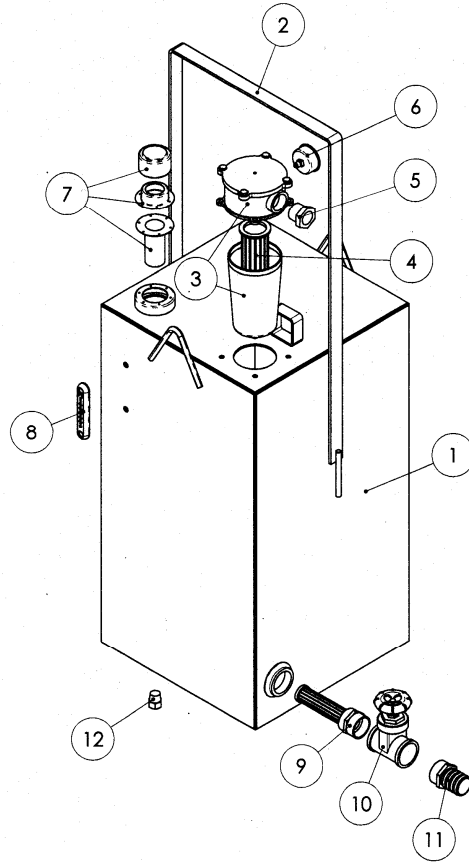
Parts

Main Frame Parts List

Item #	Part #	Description
1	501110	Main Frame Weldment
2	501107	17' Swing Post Weldment
2	501108	19' Swing Post Weldment
2	501109	21' Swing Post Weldment
3	500007	Swing Pin (Matched)
4	501000	Hitch Pin
5	501005	Base Boom Pin
6	501006	Cylinder Pin
7	501010	Speed Increaser
8	501020	Hydraulic Pump
9	501303	Swing Cylinder
10	500008	Swing Ram Bolt
11	501650	Swing Relief Valve
12	000239	Hydraulic Relief Valve
13	500008	Swing Ram Bolt
N/A	501015	Pump Drive Adaptor

Parts

Oil Tank Parts Diagram

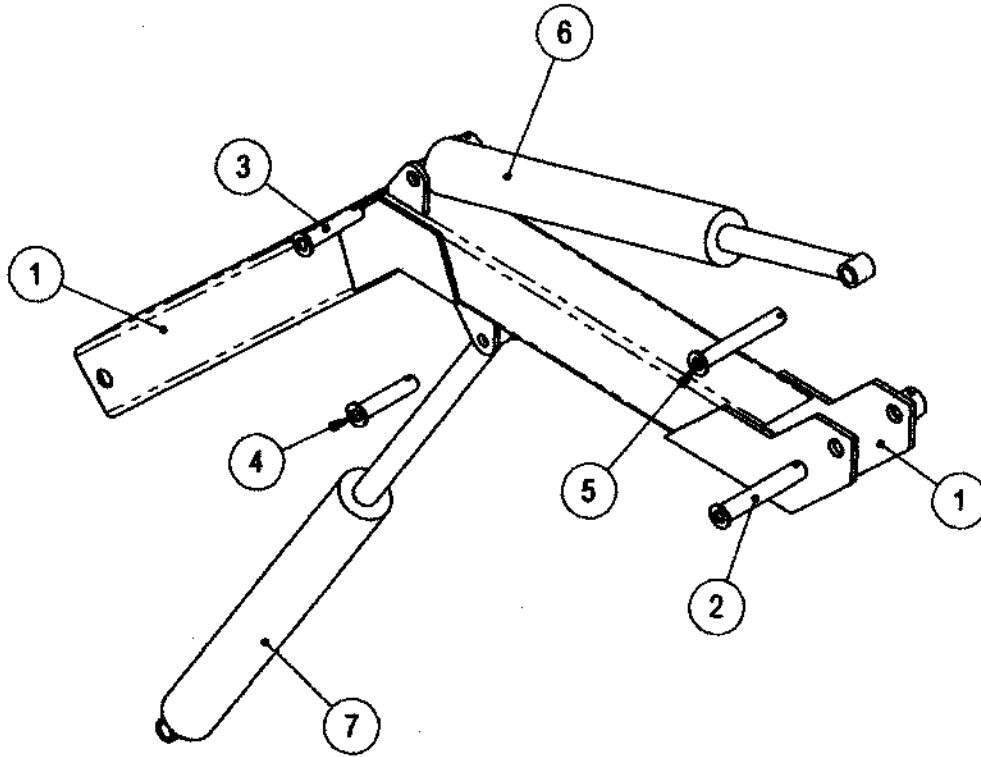


Oil Tank Parts Diagram

Item #	Part #	Description
1	004100	Oil Tank
2	004102	Oil Tank Strap
3	004110	Oil Filter Assembly
4	004115	Replacement Oil Filter Element
5	N/A	Hydraulic Fitting
6	004300	Filter Gauge
7	004000	Filler Cap
8	004050	Oil Level Gauge
9	004200	Suction Screen
10	004211	Gate Valve
11	004214	King Nipple
12	004220	Magnetic Drain Plug

Parts

Base Boom Parts Diagram

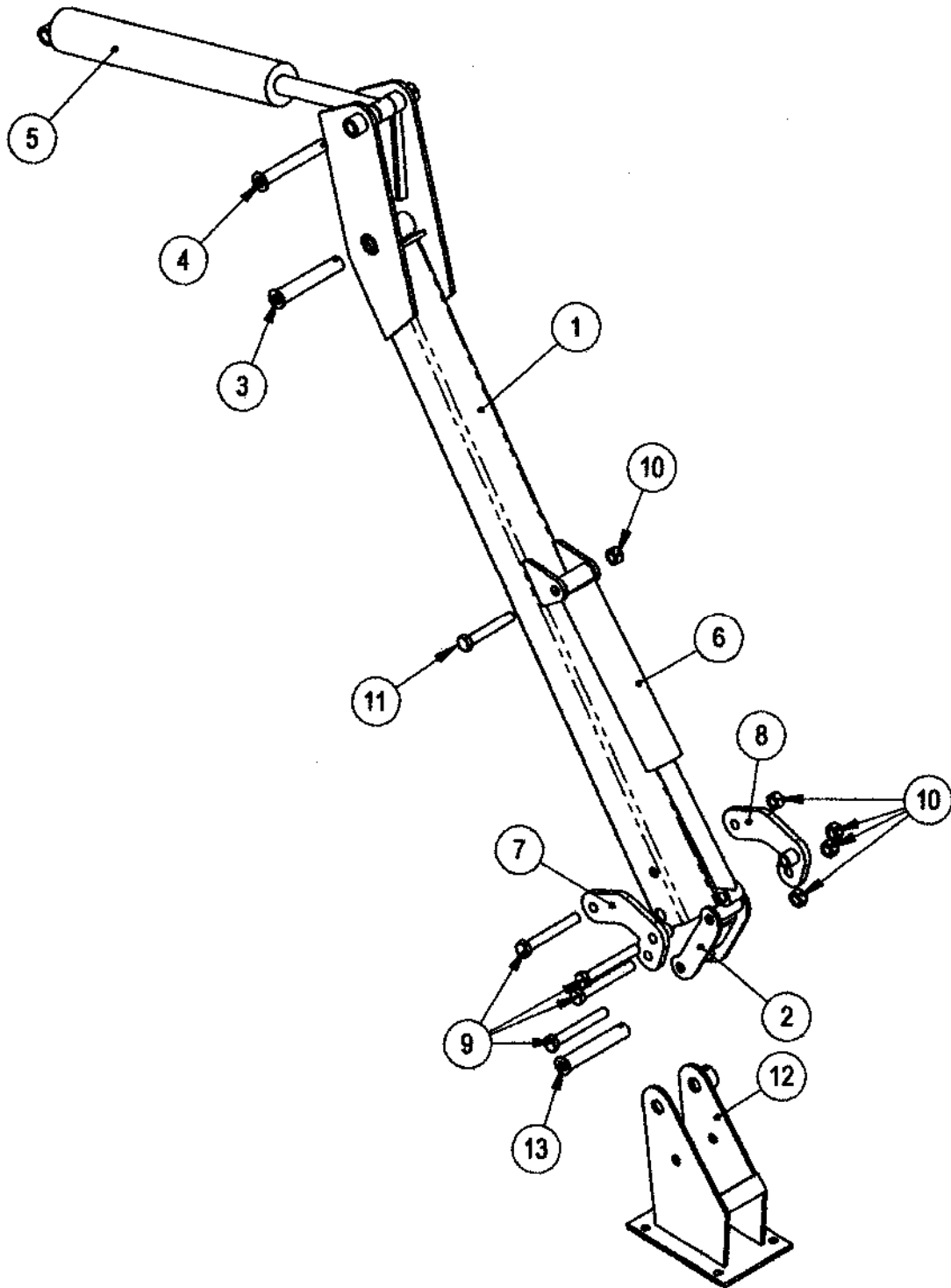


Base Boom Parts List

Item Number	Quantity	Part Number	Part Description
1	1	501100	17' Base Boom Weldment
1	1	501102	19' Base Boom Weldment
1	1	501104	21' Base Boom Weldment
2	1	500001	Outer Boom Pin (Case Hardened)
3	1	500002	Cylinder Pin
4	1	500003	Cylinder Pin (Case Hardened)
5	1	500004	Cylinder Pin (Case Hardened)
6	1	500300	Dipper Cylinder
7	1	500301	17' Lift Cylinder
7	1	500300	19' Lift Cylinder
7	1	500302	21' Lift Cylinder

Parts

Outer Boom Parts Diagram



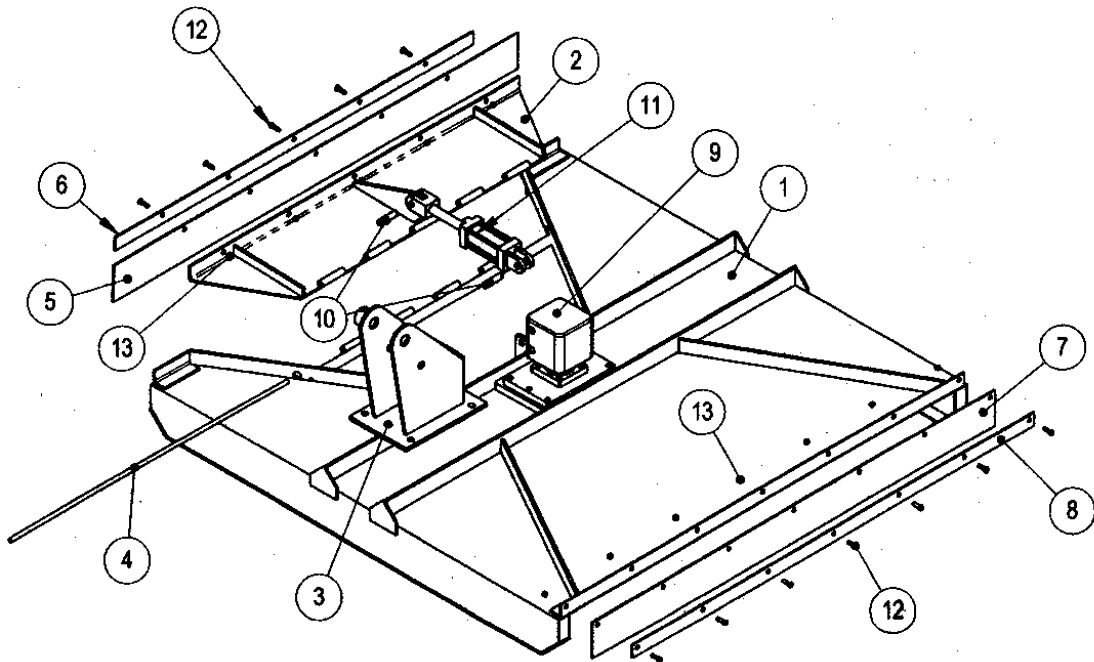
Parts

Outer Boom Parts List

Item Number	Quantity	Part Number	Part Description
1	1	501112	17' Outer Boom Weldment
1	1	501114	19' Outer Boom Weldment
1	1	501116	21' Outer Boom Weldment
2	1	500130	Inner Deck Roll Linkage
3	1	500001	Outer Boom Pin (Case Hardened)
4	1	500004	Cylinder Pin (Case Hardened)
5	1	500300	Dipper Cylinder
6	1	500304	Deck Roll Cylinder
7	1	500131	Outer Deck Roll Linkage (Back)
8	1	500132	Outer Deck Roll Linkage (Front)
9	4	500015	Bolt
10	4	500016	Nut
11	1	500018	Bolt
12	1	500140	Trunion Weldment
13	1	500011	Trunion Pin (Case Hardened)

Parts

Mower Housing Parts Diagram

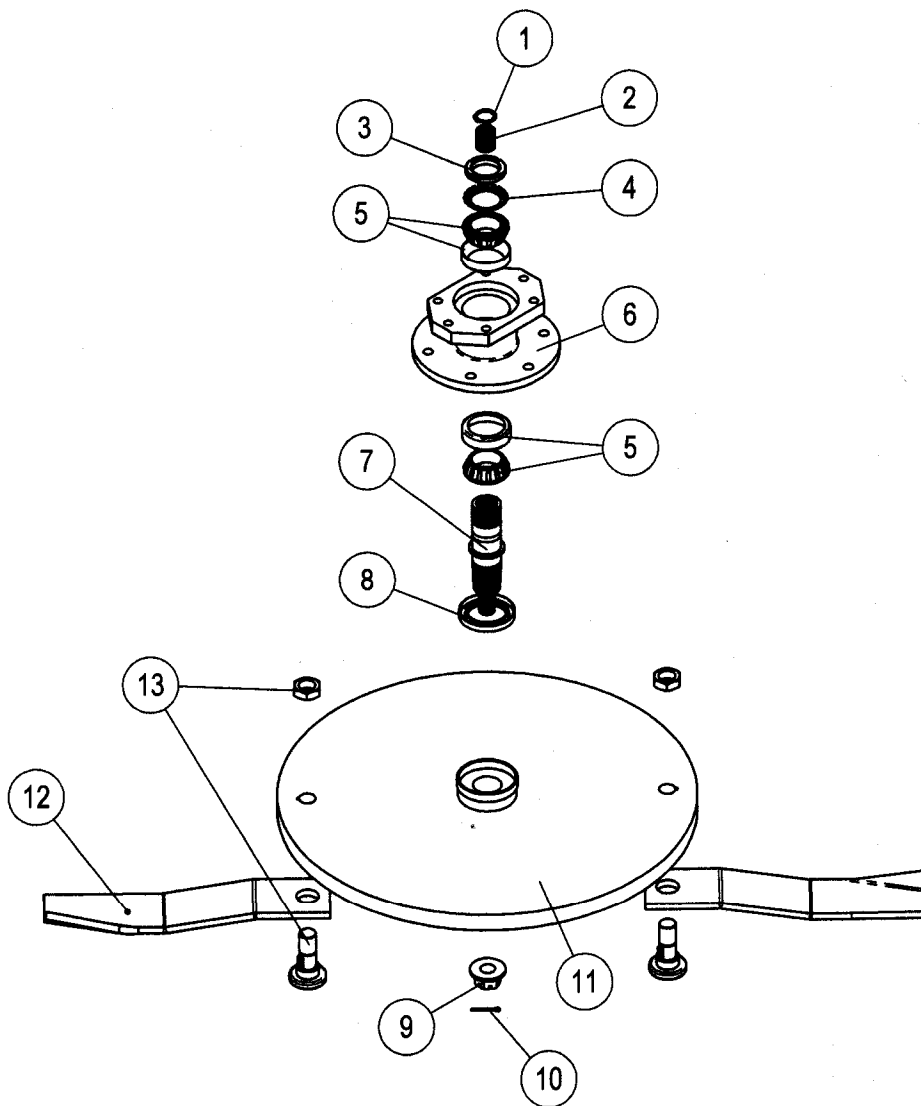


Mower Housing Parts List

Item #	Part #	Description	Item #	Part #	Description
1	508145	60" Housing Weldment	6	508132	66" Guard Flap Retainer
1	508147	66" Housing Weldment	6	508134	72" Guard Flap Retainer
1	508149	72" Housing Weldment	7	080112	60" Rear Flap
2	508150	60" Blade Guard Weldment	7	080122	66" Rear Flap
2	508152	66" Blade Guard Weldment	7	080132	72" Rear Flap
2	508154	72" Blade Guard Weldment	8	080114	60" Rear Flap Retainer
3	500140	Trunion Weldment	8	080124	66" Rear Flap Retainer
4	508110	60" Blade Guard Pin	8	080134	72" Rear Flap Retainer
4	508112	66" Blade Guard Pin	9	081238	Hydraulic Drive Motor
4	508114	72" Blade Guard Pin	10	500150	Blade Guard Linkage Pins
5	508120	60" Blade Guard Flap	11	500150	Blade Guard Linkage
5	508122	66" Blade Guard Flap	11	500151	Blade Guard Ram
5	508124	72" Blade Guard Flap	12	000141	Retainer Bolt
6	508130	60" Guard Flap Retainer	13	000142	Retainer Bolt Nut

Parts

Mower Spindle Drive Parts Diagram



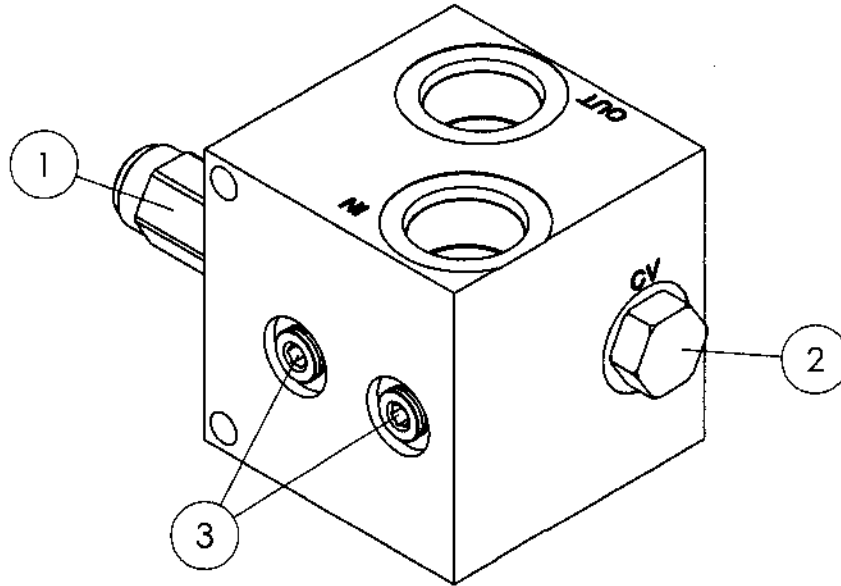
Parts

Mower Spindle Drive Parts List

Item #	Part #	Description
1-10	080220	Spindle Assy.
1	080225	Snap Ring
2	N/A	Drive Bushing
3	080222	Bearing Nut
4	080223	Bearing Lock Nut Washer
5	080224	Tapered Bearing Assy.
6	N/A	Spindle Housing
7	N/A	Spindle Shaft
8	080221	Oil Seal
9	080226	Blade Hub Retaining Nut
10	080227	Cotter Pin
11	080228	Blade Carrier
12	000196	60" Mower Blade
12	000200	66" Mower Blade
12	081172	72" Mower Blade
13	000227	Blade Bolt Assy.

Parts

Hydraulic Relief Valve Parts Diagram



Hydraulic Relief Valve Parts List

Item #	Part #	Description
1-3	080010	Relief Valve Assy.
1	080251	Relief Cartridge
2	080252	Check Valve Assy.
3	080253	# 8 O-Ring Plug